



mazda

2016
WARRANTY INFORMATION



AN IMPORTANT MESSAGE FROM MAZDA

At Mazda we are committed to producing cars and trucks that are innovative, well engineered and of the highest quality.

The comprehensive New Vehicle Warranty detailed in this booklet is evidence of the confidence we have in our products and a continuing commitment to you as one of our customers.

Just like any fine machine, Mazda cars and trucks must be operated and maintained properly to ensure a long, trouble free life. This warranty booklet, together with your Owner's Manual, explains the proper operation and maintenance required to ensure your vehicle's proper performance and the validity of the warranty. Please take the time to read and follow these instructions carefully. If you do, we are confident that you can look forward to enjoyable and reliable service from your Mazda vehicle.

Your authorized Mazda dealer is another key to your future satisfaction with your vehicle. He knows your Mazda well because of the technical training we make available to him. He has the specialized tools and the genuine Mazda parts necessary to properly service your vehicle and most importantly, has a personal commitment to your continued satisfaction with the product you have purchased. We strongly recommend that you return to an authorized Mazda dealer for all your servicing needs.

Welcome to the Mazda family.

Mazda Canada Inc.

and

Mazda Motor Corp.

	Page
Warranty Coverage at a Glance	4
Important	5
Vehicle and Owner Identification	6
When You Need to Talk to Mazda	7
New Vehicle Limited Warranty	
• What is covered	10
• What is not covered	12
• Your responsibilities	14
• Other terms	15
Powertrain Limited Warranty	16
Safety Restraint System Limited Warranty	19
Anti-Perforation Limited Warranty	21
Emission Control Warranty	23
Tire Limited Warranty	29
Replacement Parts and Accessories Limited Warranty	30
Mazda Distributors	32
Scheduled Maintenance Record	33
Registration of Ownership	38
Certificate of Transfer of Warranty	41
Change of Address or Subsequent Ownership Notification	44

Note:

All information is based on the latest data available at the time of publication and, with the exception of the emissions warranty, is subject to change without notice.

WARRANTY COVERAGE AT A GLANCE

		Warranty Term (Whichever comes first)						
		Months in Service	Km in Service					
			20,000	40,000	60,000	80,000	100,000	120,000
LIMITED WARRANTY	Service Adjustment	12	Unlimited Distance					
	Basic	36	Unlimited Distance					
	Original Equipment Battery	36	Unlimited Distance					
	Powertrain	60	Unlimited Distance					
	Safety Restraint	60	Unlimited Distance					
	Perforation	84	Unlimited Distance					
EMISSION WARRANTY	Emission Defect							
	• Any Related Parts	36	80,000					
	• Specific Parts	96	128,000					
	Emission Performance							
	• Any Related Parts *	24	38,400					
	• Specific Parts	96	128,000					
Replacement Parts & Accessories	12	20,000 ↑ From Installation Date or Purchase Date						

This chart illustrates warranty coverage by time in service and distance driven. Please read the applicable pages for detailed information on what is covered and what is not covered under each of these warranties.

*:Mazda will provide coverage under the terms of the New Vehicle Warranty.

Excluded Vehicles: The Unlimited Distance Warranty is applicable only to certain Mazda vehicles originally distributed by Mazda Canada Inc. and registered and normally operated in Canada. Any Mazda vehicle exported and registered outside of Canada or any vehicle currently or previously used for taxi, courier delivery service, police/security, and emergency services are excluded from Unlimited Distance Warranty.

Instead Mazda will provide coverage under the terms of the New Vehicle Warranty listed below:

Adjustments	12 months/20,000 km, whichever occurs first
Basic	36 months/80,000 km, whichever occurs first
Battery	36 months/80,000 km, whichever occurs first
Powertrain	60 months/100,000 km, whichever occurs first
Safety Restraints	60 months/100,000 km, whichever occurs first
Perforation	84 months/160,000 km, whichever occurs first

Note:

Tires are warranted by the Tire Manufacturers and are not covered under Mazda Unlimited Distance Warranty.

Please keep this booklet with your Mazda Vehicle.

This booklet should be presented to a Mazda Dealer if warranty service is needed.

This booklet should remain with your Mazda Vehicle, so if you sell it future owners will have this information.

■ DEFINITIONS

As used in this booklet (unless otherwise specifically stated),

- “Mazda” means Mazda Motor Corporation, 3-1 Shinchi, Fuchu-cho, Aki-gun, Hiroshima, Japan and Mazda Canada Inc., 55 Vogell Road, Richmond Hill, Ontario, L4B 3K5, Canada.
- “Mazda Vehicle” means a 2016 model year Mazda motor vehicle manufactured by or for Mazda.
- “Mazda Distributor” means Mazda Canada Inc., 55 Vogell Road, Richmond Hill, Ontario, L4B 3K5, Canada.
- “Mazda Dealer” means a person authorized by Mazda Distributor to service Mazda Vehicles or perform repairs under the warranties in this booklet.
- “Mazda Accessory” means a Mazda genuine accessory or Mazda genuine optional equipment supplied by Mazda Distributor.
- “Date of First Service” means the first date the Mazda Vehicle is delivered to the first retail purchaser, is leased or is placed into service as a company vehicle use (e.g., as a demonstrator, rental or fleet vehicle), whichever is earliest.

Satisfaction Review Process

Your complete and permanent satisfaction is of primary concern to Mazda. All Mazda Dealers have both the knowledge and tools to keep your Mazda Vehicle in top condition. In our experience, any questions, problems, or complaints regarding the operation of your Mazda Vehicle or any other general service transactions are most effectively resolved by your dealer. If the cause of your dissatisfaction cannot adequately be addressed by normal dealership procedures, we recommend that you take the following steps:

Step 1: Contact Your Mazda Dealer

Discuss the matter with a member of dealership management. If the Service Manager has already reviewed your concerns, contact the owner of the dealership or its General Manager.

Step 2: Arrange to Meet with a Mazda Service Representative

If you feel that you still require assistance, ask the dealer Service Manager to arrange for you to meet the local Mazda Service Representative.

Step 3: Contact the Mazda Customer Relations Department

If still not substantially satisfied, contact the Customer Relations Department, Mazda Canada Inc., 55 Vogell Road, Richmond Hill, Ontario, L4B 3K5, Phone: **1 (905) 787-7000**. Provide the Department with the following information:

1. Your name, address and telephone number
2. Year and model of the vehicle
3. Vehicle Identification Number (VIN). Refer to the "Vehicle Identification" pages of the Owner's Manual for the location of the VIN.
4. Purchase date
5. Present odometer reading
6. Your dealer's name and location
7. The nature of your problem and/or cause of dissatisfaction

The Department, in cooperation with the local Mazda Service Representative, will review the case to determine if everything possible has been done to ensure your satisfaction.

Please recognize that the resolution of service problems in most cases requires the use of your Mazda Dealer's service facilities, personnel and equipment. We, therefore, urge you to follow the above three steps in sequence therefore for most effective results.

WHEN YOU NEED TO TALK TO MAZDA

■ Mediation/Arbitration Program

Occasionally a customer concern cannot be resolved through Mazda's Customer Satisfaction Program. If after exhausting the procedures in this warranty handbook your concern is still not resolved, you have another option.

Mazda Canada Inc. participates in an arbitration program administered by the Canadian Motor Vehicle Arbitration Plan (CAMVAP). CAMVAP will advise you about how your concern may be reviewed and resolved by an independent third party through binding arbitration.

Your complete satisfaction is the goal of Mazda Canada Inc. and our dealers. Mazda's participation in CAMVAP makes a valuable contribution to our achieving that goal. There is no charge for using CAMVAP. CAMVAP results are fast, fair and final as the award is binding on both you and Mazda Canada Inc.

■ Canadian Motor Vehicle Arbitration Plan (CAMVAP)

If a specific item of concern arises, where a solution cannot be reached between an owner, Mazda, and/or one of its dealers (that all parties cannot agree upon), the owner may wish to use the services offered by the Canadian Motor Vehicle Arbitration Plan (CAMVAP).

CAMVAP uses the services of Provincial Administrators to assist consumers in scheduling and preparing for their arbitration hearings. However, before you can proceed with CAMVAP you must follow your manufacturer's dispute resolution process as outlined previously.

CAMVAP is fully implemented in all provinces and territories. Consumers wishing to obtain further information about the Program can obtain an information booklet from your dealer, the Provincial Administrator or the Canadian Motor Vehicle Arbitration Plan Office at the address or telephone number shown below.

Canadian Motor Vehicle Arbitration Office
235 Yorkland Boulevard, suite 300
North York, Ontario
M2J 4Y8

Provincial Administrator can be reached at:
Phone: 1 (800) 207-0685

WHEN YOU NEED TO TALK TO MAZDA

Mazda Regional Offices

REGIONAL OFFICES

COVERING AREAS

**MAZDA CANADA INC.
WESTERN REGION
5011 275 STREET
LANGLEY, BRITISH COLUMBIA
V4W 0A8
(778) 369-2100
1 (800) 663-0908**

ALBERTA,
BRITISH COLUMBIA,
MANITOBA,
SASKATCHEWAN,
YUKON

**MAZDA CANADA INC.
CENTRAL REGION
55 VOGELL ROAD,
RICHMOND HILL,
ONTARIO, L4B 3K5
1 (800) 263-4680**

ONTARIO,
NEW BRUNSWICK,
NOVA SCOTIA,
PRINCE EDWARD ISLAND,
NEWFOUNDLAND

**MAZDA CANADA INC.
QUEBEC REGION
6111 ROUTE TRANS-
CANADIENNE
POINTE CLAIRE, QUEBEC
H9R 5A5
(514) 694-6390**

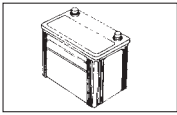
QUEBEC

NEW VEHICLE LIMITED WARRANTY

1. What Is Covered

The New Vehicle Limited Warranty period is **36 months** (unlimited distance). This Limited Warranty period begins on the Date of First Service. "Date of First Service" means the first date the Mazda Vehicle is delivered to the first retail purchaser, is leased or is placed into service as a company vehicle use (e.g., as a demonstrator, rental or fleet vehicle), whichever is earliest. This Limited Warranty does not mean that each Mazda vehicle is defect free. For this reason, Mazda provides this Limited Warranty in order to remedy during the warranty period any such defects in materials and workmanship of all parts and components supplied by Mazda subject to the exclusions indicated under "Exceptions" and "What is Not Covered". The vehicle must be brought to an authorized Mazda dealer for all warranty service. The authorized Mazda dealer will without charge for parts or labor, either repair or replace the defective part(s) using new or authorized remanufactured parts. This transferable Limited Warranty is included with all new Mazda vehicles sold in Canada. Mail the "Subsequent Ownership Notification" attached to the end of the booklet to your Mazda Importer / Distributor.

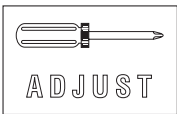
■ Original Equipment Battery



The originally equipped battery is fully covered for **36 months** (unlimited distance). The warranty period begins on the Date of First Service. "Date of First Service" means the first date the Mazda Vehicle is delivered to the first retail purchaser, is leased or is placed into service as a company vehicle use (e.g., as a demonstrator, rental or fleet vehicle), whichever is earliest.

■ Exceptions

The items specified below are covered for the periods different from the basic coverage.



● Adjustments

Service adjustment is covered for the first **12 months** (unlimited distance).

Service adjustment means minor repairs not usually associated with the replacement of parts, such as wheel balance and alignment, tension adjustment of automatic transmission throttle cable and V-belt, fitting of engine hood, trunk lid, or rear hatch, etc.

Note:

Adjustments required to conform to a province-approved emission short test, are subject to applicable emission warranty coverage.

NEW VEHICLE LIMITED WARRANTY



• Air Conditioner Refrigerant Charge

Air conditioner refrigerant charge is covered for the first **12 months** (unlimited distance).

Over the balance of the warranty period, refrigerant charge is covered only when replenished as part of a warranty repair.

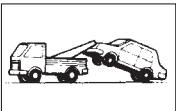
2. Mazda Added Protection



Additional Mechanical Repair Protection is available through your authorized Mazda Dealer.

Ask for details.

3. Towing/Roadside Assistance



Mazda's Roadside Assistance Program provides emergency assistance for your Mazda Vehicle during the first 3 years from the in-service date.

Towing will be provided to the nearest authorized Mazda Dealer. Please refer to the Mazda Roadside Assistance Information Card or www.mazda.ca for specific program information or call the nearest Mazda Dealer to request towing assistance.

4. Warranty Application



The Unlimited Distance Warranty is applicable only to certain Mazda vehicles originally distributed by Mazda Canada Inc. and registered and normally operated in Canada. Any Mazda vehicle exported and registered outside of Canada or any vehicle currently or previously used for taxi, courier delivery service, police/security, and emergency services are excluded from Unlimited Distance Warranty. Refer to Warranty Coverage at a Glance for further information. During the warranty period, this warranty is transferable to subsequent owners. Please use the "Subsequent Ownership Notification" attached to the end of the booklet to make this change. If you have any questions in this regard, please contact your Mazda Dealer for assistance.

NEW VEHICLE LIMITED WARRANTY

5. What Is Not Covered

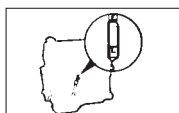


■ Factors Beyond the Manufacturer's Control

- Misuse of the Mazda Vehicle such as driving over curbs, overloading, racing, snowplowing, etc. (Proper usage is described in your Owner's Manual.)
- Accidents such as collision, fire, theft, riot etc.
- Alteration, modification, tampering etc. including the installation of non-genuine Mazda parts or accessories.
- If the vehicle has been classified a total loss and/or sold for salvage purposes or branded for any other reasons.



- Damage or surface corrosion from the environment such as: Acid rain, airborne fallout (chemicals, tree sap, etc), salt, road debris, road hazards, rail dust, water contamination, hail, wind storm, lightning, floods and other natural disasters.
- Cosmetic conditions or surface corrosion from stone chips or scratches in the paint.
- Registration of the vehicle out of Canadian Markets as identified in the "Warranty Application" for New Vehicle Limited Warranty section of this booklet.



■ Damage due to Lack of Maintenance or the Use of Wrong Fuel, Oil or Lubricants

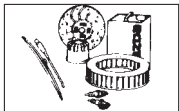
- Lack of proper maintenance as described in your Owner's Manual. (Failure to properly maintain your vehicle can result in your warranty being voided either in whole or in part.)
- Improper maintenance, the use of other than specified fuel, oil or other lubricants recommended in your Owner's Manual.
- Any repair performed by a repair facility that is not an authorized Mazda dealer and/or not using genuine Mazda parts or accessory.



■ Normal Deterioration

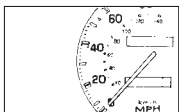
- Normal wear and tear, including noise, vibration, cosmetic condition or deterioration such as discolouration, fading, deformation, blurring etc.
- Surface corrosion on any part other than the body sheet metal panels forming the exterior appearance of a Mazda Vehicle.

5. What Is Not Covered (Cont'd)



■ Maintenance is at Owner's Expense

- Normal maintenance services such as cleaning and polishing, lubrication, and replenishment or replacement of oil, fluid, coolant, worn wiper blades, filters, worn brake and clutch linings, spark plugs, fuses, hoses, tires, glass, brake rotors/drums, struts/shocks due to normal wear or damage, keyless transmitter batteries etc.
- Maintenance services described as “Scheduled Maintenance Services”, “Owner Maintenance Services” or “Appearance Care” in your Owner’s Manual.



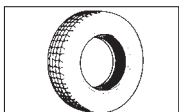
■ Altered Kilometrage

- Any repair of a Mazda Vehicle on which the odometer has been altered or on which the actual distance traveled cannot be readily determined.
(When replacing the speedometer, the “Speedometer Replacement Record” on page 6 must be filled in by a Mazda Dealer.)



■ Extra Expenses and Damages

- Any financial loss, for example: payment made for loss of use of the Mazda Vehicle, lodging, car rentals, travel costs, loss of pay and any other expenses or damages.
- Incidental or consequential damages associated with a vehicle failure. Such damages include but are not limited to inconvenience, the cost of transportation, telephone calls and lodging, the loss of personal or commercial property, and the loss of pay or revenue.



■ Tires

- Tires are warranted by the tire manufacturers. Refer to the “Tire Limited Warranty” on page 29 for a brief explanation or the tire warranty pamphlets provided with your Mazda Vehicle for details.

NEW VEHICLE LIMITED WARRANTY

6. Your Responsibilities

■ Maintenance

You are responsible for properly operating and maintaining your Mazda Vehicle in accordance with the instructions and maintenance schedule described in your Owner's Manual. You should routinely check your vehicle's engine oil level at least once a month and regularly replace the oil and filter. Failure to do so can cause oil starvation and or sludge deposits, which can result in severe engine damage and costly repairs that are not covered by the new vehicle Basic Coverage Warranty or Powertrain Warranty.

■ Maintenance Records - Proof of Maintenance

Mazda recommends having maintenance performed by an authorized Mazda dealership. Mazda dealership technicians are specially trained to maintain and service Mazda vehicles; Mazda technicians stay up-to-date on the latest service information through service bulletins, publications, and factory training. You can be reassured you are getting the best possible service for your Mazda vehicle when you take it to your Mazda dealer. If you elect to perform maintenance yourself or have your vehicle serviced at a location other than an Authorized Mazda Dealer, Mazda requires that all fluids, parts and materials must meet Mazda standards for durability and performance as described in your Owner's Manual. To continue warranty eligibility and to protect your investment, it is your responsibility to properly maintain your vehicle according to factory recommended schedules outlined in your Owner's Manual. As part of this you must keep your maintenance records, receipts, repair orders and any other documents as evidence this maintenance was performed. You must present these documents, should any warranty coverage disagreement occur. Failure to do so can result in your warranty being voided either in whole or in part.

This evidence may consist of the following:

- The Mazda Scheduled Maintenance Record, on page 34, must be completely filled out showing mileage, repair order number, date for each service, and signed by a qualified automotive service technician who service vehicles.
- Original copies of repair orders or other receipts that include the mileage and date the vehicle was serviced. Each receipt should be signed by a qualified automotive service technician.
- For self maintenance, a statement that you completed the maintenance yourself, displaying mileage and the date the work was performed. Also, receipts for the replacement parts (fluid, filters, etc.) indicating the date and mileage must accompany this statement.

Note:

If you elect to perform maintenance yourself or have your vehicle serviced at a location other than an Authorized Mazda Dealer, Mazda requires that all fluids, parts and materials must meet Mazda standards for durability and performance as described in your Owner's Manual.

7. To Get Warranty Service

You must take your Mazda Vehicle, along with this booklet, to a Mazda Dealer in Canada, the United States, Mexico or Puerto Rico during their normal service hours and prior to the expiration of the warranty period. While any of the Mazda Dealers will perform warranty service, Mazda recommends that you return to the dealership where you purchased your Mazda Vehicle because you have already established a relationship with them.

If you have any questions or need assistance regarding this warranty, refer to “When You Need to Talk to Mazda” on page 7.

8. Limited Liability

The liability of Mazda under this warranty is limited solely to the repair or replacement of parts defective in Mazda-supplied material, or workmanship by a Mazda Dealer at its place of business. Specifically, it does not include any expense of, or payment for loss of use of the Mazda Vehicle during warranty repairs.

9. Other Terms

This warranty gives you specific legal rights, and you may also have other rights which vary from province to province.

All Implied Warranties, including but not limited to any regarding marketability or fitness for a particular purpose, are limited respectively to the duration of this warranty.

This warranty is given in lieu of all other Express Warranties (except those set forth separately in this booklet) on the part of Mazda, the Mazda Distributor, or the Mazda Dealer selling the Mazda Vehicle. No dealer, or any agent or employee thereof, is authorized to extend or expand this warranty. Mazda or the Mazda Distributor shall not be liable for any incidental, special, consequential, or exemplary damages, or any service not expressly provided for herein.

Some provinces do not allow limitations on how long an implied warranty lasts or the exclusion or limitation of incidental or consequential damages, so the above limitations or exclusions may not apply to you.

POWERTRAIN LIMITED WARRANTY

1. What Is Covered

The Powertrain Limited Warranty period is **60 months** (unlimited distance). This Limited Warranty period begins on the Date of First Service. “Date of First Service” means the first date the Mazda Vehicle is delivered to the first retail purchaser, is leased or is placed into service as a company vehicle use (e.g., as a demonstrator, rental or fleet vehicle), whichever is earliest. This Limited Warranty does not mean that each Mazda vehicle is defect free. For this reason, Mazda provides this Limited Warranty in order to remedy during the warranty period any such defects in materials and workmanship of the Powertrain components supplied by Mazda subject to the exclusions indicated under “What is Not Covered”. The vehicle must be brought to an authorized Mazda dealer for all warranty service. The authorized Mazda dealer will without charge for parts or labor, either repair or replace the defective part(s) using new or authorized remanufactured parts. This transferable Limited Warranty is included with all new Mazda vehicles sold in Canada. Mail the “Subsequent Ownership Notification” attached to the end of the booklet to your Mazda Importer / Distributor.

■ Powertrain components

The following is a general list of components covered by this warranty.
(See page 18 for specific components covered.)

- Engine
- Transmission and Transaxle
- Front /Rear Drive System

2. Towing

If your Mazda Vehicle is not driveable because of a problem covered by this warranty, call the nearest Mazda Dealer for towing assistance. Towing service will be covered to the nearest Mazda Dealer during the coverage period of the Powertrain Limited Warranty.

If your vehicle is within 3 years from the in service date please refer to Towing/Roadside Assistance on page 11.

3. What Is Not Covered

The “What is Not Covered” is the same as stated for New Vehicle Limited Warranty section of this booklet.

4. Your Responsibilities

■ Maintenance

You are responsible for properly operating and maintaining your Mazda Vehicle in accordance with the instructions and maintenance schedule described in your Owner’s Manual. You should routinely check your vehicle’s engine oil level at least once a month and regularly replace the oil and filter. Failure to do so can cause oil starvation and or sludge deposits, which can result in severe engine damage and costly repairs that are not covered by the new vehicle Basic Coverage Warranty or Powertrain Warranty.

■ Maintenance Records - Proof of Maintenance

Mazda recommends having maintenance performed by an authorized Mazda dealership. Mazda dealership technicians are specially trained to maintain and service Mazda vehicles; Mazda technicians stay up-to-date on the latest service information through service bulletins, publications, and factory training. You can be reassured you are getting the best possible service for your Mazda vehicle when you take it to your Mazda dealer. If you elect to perform maintenance yourself or have your vehicle serviced at a location other than an Authorized Mazda Dealer, Mazda requires that all fluids, parts and materials must meet Mazda standards for durability and performance as described in your Owner's Manual. To continue warranty eligibility and to protect your investment, it is your responsibility to properly maintain your vehicle according to factory recommended schedules outlined in your Owner's Manual. As part of this you must keep your maintenance records, receipts, repair orders and any other documents as evidence this maintenance was performed. You must present these documents, should any warranty coverage disagreement occur. Failure to do so can result in your warranty being voided either in whole or in part.

This evidence may consist of the following:

- The Mazda Scheduled Maintenance Record, on page 34, must be completely filled out showing mileage, repair order number, date for each service, and signed by a qualified automotive service technician who service vehicles.
- Original copies of repair orders or other receipts that include the mileage and date the vehicle was serviced. Each receipt should be signed by a qualified automotive service technician.
- For self maintenance, a statement that you completed the maintenance yourself, displaying mileage and the date the work was performed. Also, receipts for the replacement parts (fluid, filters, etc.) indicating the date and mileage must accompany this statement.

Note:

If you elect to perform maintenance yourself or have your vehicle serviced at a location other than an Authorized Mazda Dealer, Mazda requires that all fluids, parts and materials must meet Mazda standards for durability and performance as described in your Owner's Manual.

5. Warranty Application

The "Warranty Application" is the same as stated for New Vehicle Limited Warranty section of this booklet.

6. Limited Liability

The liability of Mazda under this warranty is limited solely to the repair or replacement of parts defective in Mazda-supplied material, or workmanship by a Mazda Dealer at its place of business. Specifically, it does not include any expense of, or related to, transportation to such a dealer or payment for loss of use of the Mazda Vehicle during warranty repairs.

7. Other Terms

The "Other Terms" stated on page 15 in the New Vehicle Limited Warranty also apply to this warranty.

POWERTRAIN LIMITED WARRANTY

8. Powertrain Warranty Parts List

Below are the powertrain components covered under the Powertrain Limited Warranty:

■ Engine

- Cylinder Block, Cylinder Head, and All Internal Lubricated Parts (Piston engines)
- Timing gears
- Timing chain/belt and tensioner
- Timing chain/belt front cover and gaskets
- Flywheel
- Valve Covers and Gaskets
- Oil Pan
- Oil Pump
- Intake Manifold and Gaskets
- Exhaust Manifold and Gaskets
- Engine Mounts
- Turbocharger Housing and All Internal Parts
- Supercharger Housing and All Internal Parts
- Water Pump and Gaskets
- Thermostat and Gaskets
- Fuel Pump
- Seals and Gaskets

■ Transmission and transaxle

- Transmission Case and All Internal Parts
- Torque converter
- Clutch Pressure Plate
- Transmission Mounts
- Transfer Case and All Internal Parts
- Transmission/Transaxle Control Module

■ Front/Rear Drive System

- Final Drive Housing and all Internally Lubricated Parts
- Rear Axle Housing (Differential) and all Internally Lubricated Parts
- Manual and Automatic Hub (4x4)
- Front Wheel Hubs and Bearing (FWD or AWD only)
- Rear Axle/Hub Bearings (RWD or AWD only)
- Axle/Drive Shafts
- Universal Joints
- Constant Velocity Joints
- Propeller shaft (RWD or AWD only)
- Seals and Gaskets

SAFETY RESTRAINT SYSTEM LIMITED WARRANTY

To help decrease the possibility or severity of injury during accidents or emergency stops, Mazda strongly recommends that the driver and all vehicle occupants be properly restrained at all times by using the seat belts provided. (Proper use is outlined in your Owner's Manual.) In addition to the seat belts, many Mazda Vehicles are equipped with supplemental restraint systems (air bags). Air bags are designed to supplement the seat belts by providing additional protection by restraining the forward motion in a more serious frontal accident. The air bags alone may not prevent severe injury in an accident. The driver and all vehicle occupants should always wear seat belts.

1. What Is Covered

The Safety Restraint System Limited Warranty period is **60 months** (unlimited distance). This Limited warranty period begins on the Date of First Service. "Date of First Service" means the first date the Mazda Vehicle is delivered to the first retail purchaser, is leased or is placed into service as a company vehicle use (e.g., as a demonstrator, rental or fleet vehicle), whichever is earliest. This Limited Warranty does not mean that each Mazda vehicle is defect free. For this reason, Mazda provides this Limited Warranty in order to remedy during the warranty period any such defects in materials and workmanship of the Safety Restraint System components supplied by Mazda subject to the exclusions indicated under "What is Not Covered". The vehicle must be brought to an authorized Mazda dealer for all warranty service. The authorized Mazda dealer will without charge for parts or labor, either repair or replace the defective part(s) using new parts. This transferable Limited Warranty is included with all new Mazda vehicles sold in Canada. Mail the "Subsequent Ownership Notification" attached to the end of the booklet to your Mazda Importer / Distributor.

■ Safety Restraint System components

The following components are covered by this warranty.

- Seat Belts and Related Components
- Air Bag System

2. Warranty Application

The "Warranty Application" is the same as stated for New Vehicle Limited Warranty section of this booklet.

3. What Is Not Covered

- Repair or replacement required due to misuse, negligence, improper repair/adjustment, alteration, or accident/collision damage.
- Replacement of proper functioning part for comfort or appearance.
- Incidental or consequential damages such as loss of use of your Mazda Vehicle, inconvenience or commercial loss.
- If the vehicle has been classified a total loss and/or sold for salvage purposes or branded for any other reasons.
- Registration of the vehicle out of the U.S., Canadian, or Mexican Markets as identified in the "Warranty Application" for New Vehicle Limited Warranty section of this booklet.

SAFETY RESTRAINT SYSTEM LIMITED WARRANTY

4. To Get Warranty Service

You must take your Mazda Vehicle as soon as possible, along with this booklet, to any Mazda Dealer in Canada, the United States, Mexico or Puerto Rico during their normal service hours, if a problem exists.

If you have any questions or need assistance regarding this warranty, refer to “When You Need to Talk to Mazda” on page 7.

5. Limited Liability

The liability of Mazda under this warranty is limited solely to the repair or replacement of parts defective in Mazda-supplied material, or workmanship by a Mazda Dealer at its place of business. Specifically, it does not include any expense of, or related to, transportation to such a dealer or payment for loss of use of the Mazda Vehicle during warranty repairs.

6. Other Terms

The “Other Terms” stated on page 15 in the New Vehicle Limited Warranty also apply to this warranty.

ANTI-PERFORATION LIMITED WARRANTY

1. What Is Covered

The Anti-Perforation Limited Warranty period is **84 months** (unlimited distance). The warranty period begins on the Date of First Service. “Date of First Service” means the first date the Mazda Vehicle is delivered to the first retail purchaser, is leased or is placed into service as a company vehicle use (e.g., as a demonstrator, rental or fleet vehicle), whichever is earliest. This Limited Warranty does not mean that each Mazda vehicle is defect free. For this reason, Mazda provides this Limited Warranty in order to remedy during the warranty period any such perforation (hole through the body panel) due to corrosion of the body sheet metal panels supplied by Mazda subject to the exclusions indicated under “What is Not Covered”. The vehicle must be brought to an authorized Mazda dealer for all warranty service. The authorized Mazda dealer will without charge for parts or labor, either repair or replace the defective part(s) using new parts. This transferable Limited Warranty is included with all new Mazda vehicles sold in Canada. Mail the “Subsequent Ownership Notification” attached to the end of the booklet to your Mazda Importer / Distributor.

2. Warranty Application

This **84 months** (unlimited distance) perforation warranty is applicable only to Mazda vehicles originally distributed by Mazda Canada Inc., and registered and normally operated in Canada.

3. What Is Not Covered

- Any perforation due to corrosion of the Mazda Vehicle which is caused by industrial fallout, accident, damage, abuse, vehicle modifications or cargo that is damaging or corrosive to the Mazda Vehicle.
- Any surface corrosion of the Mazda Vehicle which does not result in perforation, such as that typically caused by sand, salt, saltpeter/nitre, hail or stones.
- Any perforation due to corrosion of the Mazda Vehicle which results, not from a defect in material or workmanship, but from failure to maintain the Mazda Vehicle in accordance with the procedures specified in item 4. (Your Responsibilities) of this warranty and the Owner’s Manual provided with your Mazda Vehicle.
- Any perforation due to corrosion of a part of the Mazda Vehicle which is not a body sheet metal panel. As used herein, “body sheet metal panel” specifically excludes all parts which are components of the exhaust system of the Mazda Vehicle.
- Any perforation to panels previously repaired to correct collision damage, fire, theft, natural disaster, etc.
- Registration of the vehicle out of Canada.
- If the vehicle has been classified a total loss and/or sold for salvage purposes or branded for any other reasons.

ANTI-PERFORATION LIMITED WARRANTY

4. Your Responsibilities

You should maintain your Mazda Vehicle in accordance with “APPEARANCE CARE” in the Owner’s Manual.

- You shall retain the evidence that proper maintenance has been performed on your Mazda Vehicle by an Authorized Mazda Dealer.
- You must repair, without delay and at your expense, any body corrosion or damage due to customer neglect, lack of maintenance or external causes.
- You should inform an Authorized Mazda Dealer at the earliest possible date, when you find paint damage, surface corrosion or perforation to a body sheet metal panel of your Mazda Vehicle.

Inspect the body sheet metal panels of your Mazda Vehicle frequently and if you detect any stone chips or scratches in the paint or protective coating, touch them up immediately.

In addition, special care should be taken to protect your Mazda Vehicle from corrosion.

- If you drive on salted roads, or if you drive near the ocean, flush the underbody at least once a month with clean water.
- It is important to keep the drain holes in the lower edges of the body clear.
- If your Mazda Vehicle is damaged due to an accident or any event which may cause damage to the paint, have your Mazda Vehicle repaired as soon as possible.
- If you carry special cargo, such as chemicals, fertilizers, de-icing salt, or other corrosive substances, be sure that such materials are well packaged and sealed.
- If you drive frequently on gravel roads, we recommend that you install stone guards behind each wheel.

5. To Get Warranty Service

You must take your Mazda Vehicle, along with this booklet, to any Mazda Dealer in Canada during their normal service hours. If you have any questions or need assistance regarding this warranty, refer to “When You Need to Talk to Mazda” on page 7.

6. Limited Liability

The liability of Mazda under this warranty is limited solely to the repair or replacement of parts defective in material or workmanship by a Mazda Dealer at its place of business. Specifically, it does not include any expense of, or related to, transportation to such a dealer or payment for loss of use of the Mazda Vehicle during warranty repairs.

7. Other Terms

The “Other Terms” stated on page 15 in the New Vehicle Limited Warranty also apply to this warranty.

1. Introduction

The following two emission-related warranties are provided:

- Emissions Defect Warranty, which covers certain parts of each vehicle's emissions control systems against defects in materials and workmanship, and
- Emissions Performance Warranty, which covers repairs to certain parts of each vehicle's emission control systems *if certain conditions are met* (see Section 5, below, for those conditions).

These two emissions warranties apply to all Mazda Vehicles registered and normally operated in Canada. They are given in lieu of all other express or implied warranties (except those set forth separately in this booklet) on the part of Mazda, Mazda Importer/Distributor or the Mazda Dealer selling this Mazda Vehicle. No dealer, or any agent or employee thereof, is authorized to extend or expand these warranties.

2. Definitions

- (a) "Owner" means the original and any subsequent owner of a Mazda Vehicle.
- (b) "Mazda Part" means a part sold by a Mazda Dealer, whether new or remanufactured, which is supplied by Mazda.
- (c) "Emission Warranty Part" means a part installed on or in a Mazda Vehicle by or at the direction of Mazda for the sole or primary purpose of reducing the Mazda Vehicle's emissions and that was not in general use prior to model year 1968. The Emission Warranty Parts are listed in Sections 6 and 7, below.
- (d) "Written Maintenance Instructions" means those maintenance and operation instructions, together with the time and/or kilometrage interval at which such maintenances are to be performed, specified in the Owner's Manual for the Mazda Vehicle as being necessary to assure compliance of the Mazda Vehicle with applicable emission standards during the term of this warranty, as specified by law.

EMISSION CONTROL WARRANTY

3. Exclusions from the Emission Warranties

The following are NOT covered by these Emissions Warranties:

- (1) Any incidental, consequential, or exemplary damages (whether in contract or tort), including loss of time, inconvenience, loss of use of the vehicle, cost of transporting it for repair or service, and commercial loss.
- (2) Damage resulting from accidents misuse, natural disaster, or events beyond the control of Mazda.
- (3) If the vehicle has been classified a total loss and/or sold for salvage purposes or branded for any other reasons.
- (4) Lack of proper maintenance, including repairs improperly performed or replacements improperly installed by any person other than a Mazda Dealer, or a replacement part or accessory not conforming to Mazda's specifications.
- (5) Any repair of the vehicle on which the odometer kilometrage has been altered or on which the actual kilometrage cannot be readily determined. (When replacing the speedometer, the "Speedometer Replacement Record" on page 6 must be filled in by a Mazda Dealer.)
- (6) Registration of the vehicle out of the U.S., Canadian, or Mexican Markets as identified in the "Warranty Application" for New Vehicle Limited Warranty section of this booklet.

4. Emission Defect Warranty

Mazda warrants to the ultimate purchaser and each subsequent purchaser that this Mazda Vehicle is designed, built, and equipped so as to conform at the time of sale with applicable regulations. This Warranty does not mean that each Mazda vehicle is defect free. For this reason, Mazda provides this Warranty in order to remedy during the warranty period any such defects in materials and workmanship which would cause it to fail to conform with the applicable regulations during the warranty periods mentioned herein after. The vehicle must be brought to an authorized Mazda dealer for all warranty service. The applicable regulation requires that the warranty period is for the first 24 months* or 38,400 km, whichever comes first. However, Mazda will provide you a coverage of **36 months* or 80,000 km**, whichever comes first, under the terms of the New Vehicle Limited Warranty. The applicable regulation also requires that the warranty period for specific major Emission Warranty Parts listed in Section 7 below is for the first **96 months* or 128,000 km**, whichever comes first.

* The warranty period begins on the Date of First Service. "Date of First Service" means the first date the Mazda Vehicle is delivered to the first retail purchaser, is leased or is placed into service as a company vehicle use (e.g., as a demonstrator, rental or fleet vehicle), whichever is earliest. Any defects in warranted parts that are identified within those warranty periods will be repaired or replaced by Mazda, as its option, with new or remanufactured parts at no cost to the Mazda Vehicle owner by a Mazda Dealer in Canada. The liability of Mazda under this Emission Defect Warranty is solely limited to such repair or replacement.

5. Emission Performance Warranty

■ Important Notice

A remedy will be available under this warranty only when a vehicle fails a province-approved emission short test; usually this means when an Owner could be subject to a penalty under provincial law because of such a failure. At the date of the printing of this warranty, many provinces did not have vehicle inspection programs for testing vehicles for conformity with such short tests and had not enacted laws subjecting vehicle Owners to such penalties. Therefore, it is possible that in many provinces or local areas, no remedy will be available under this warranty as a matter of law.

■ Warranty

Mazda warrants to each Owner that if:

- (a) The Mazda Vehicle is maintained and operated in compliance with the Written Maintenance Instructions; and
- (b) The Mazda Vehicle fails to conform at any time during the term of this warranty to the applicable emission standards as judged by an emission test approved by a province; and
- (c) Such nonconformity results or will result in the Owner having to bear any penalty or other sanction (including the denial of the right to use the Mazda Vehicle) under local, or provincial law; and
- (d) If such nonconformity results from the failure of an Emission Warranty Part,

Mazda shall remedy the nonconformity at no cost to the Owner in accordance with the following:

- During a period of vehicle operation that does not exceed **24 months* or 38,400 km**, whichever comes first, if the failed Emission Warranty Part is listed in the 24 months/38,400 km Emission Warranty Parts List in Section 6, below.
- During a period of vehicle operation that does not exceed **96 months* or 128,000 km**, whichever comes first, if the failed Emission Warranty Part is listed in the 96 months/128,000 km Emission Warranty Parts List in Section 7, below.

* The warranty period begins on the Date of First Service. “Date of First Service” means the first date the Mazda Vehicle is delivered to the first retail purchaser, is leased or is placed into service as a company vehicle use (e.g., as a demonstrator, rental or fleet vehicle), whichever is earliest.

EMISSION CONTROL WARRANTY

■ Compliance with Written Maintenance Instructions

Each Owner is required to comply with the Written Maintenance Instructions and a claim under this warranty may be denied on the basis of noncompliance by the Owner with such instructions.

If and when it is considered that the vehicle's nonconformity with the applicable emission standards has resulted from the Owner's noncompliance with those Written Maintenance Instructions which the manufacturer considers necessary for the vehicle to meet the standards, the Owner may be required to submit evidence of such compliance. Receipts and other documents covering the performance of Scheduled Maintenance and proper use in accordance with the Written Maintenance Instructions, including but not limited to the validated Scheduled Maintenance Record in this booklet, should, therefore, be retained by the Owner and should be transferred to each subsequent Owner of the Mazda Vehicle.

■ Use of Mazda Parts

The Mazda Vehicle is designed, built and tested using Mazda Parts so that the Mazda Vehicle is able to perform in conformity with provincial regulations as provided by this warranty.

Accordingly, it is recommended that any replacement parts used for maintenance, repair or replacement of the Mazda Vehicle be Mazda Parts, or parts equivalent to those with which the Mazda Vehicle or its engine was originally equipped.

■ Use of Non-Mazda Parts

Owners may elect to use parts other than Mazda Parts in the performance of any maintenance or repairs and such use in itself will not invalidate this warranty. However, use of parts other than Mazda, may cause Mazda to deny an emission performance warranty claim on the basis of non-Mazda replacement parts used in the maintenance or repair of a Mazda Vehicle if the non-Mazda replacement parts are either defective in material or workmanship or not equivalent, from an emission standpoint, to Mazda Parts.

■ Repair or Replacement by Mazda Dealer

Mazda's obligation to remedy nonconformities under this warranty shall be performed by a Mazda Dealer, which shall make all adjustments, repairs or replacements necessary to assure that the Mazda Vehicle complies with applicable emission standards of a province and that the Mazda Vehicle will continue to comply during the remainder of the term of this warranty (if proper maintenance and operation are continued).

EMISSION CONTROL WARRANTY

■ Maintenance by An Establishment or Individual Other Than Mazda

Maintenance, replacement, or repair of the emission control devices and systems covered by this warranty may be performed by any automotive repair establishment or individual using Mazda Parts. However, the Owner should note that service by a person other than a Mazda Dealer may cause Mazda to deny a claim under this warranty, if it is shown that the improper installation or adjustment of any part has caused the Mazda Vehicle to fail the emission test, either directly or by causing another warranted part to fail.

■ Warranty Claim Procedures

A warranty claim may be submitted by bringing the Mazda Vehicle to any Mazda Dealer during the Dealer's regular business hours, together with a copy of a failed emissions test. Upon presentation of a claim, Mazda shall notify the Owner within 30 days, or a shorter period of time within which repair is required by local, or provincial law, that the claim will be honored or shall provide the Owner in writing with an explanation of the basis upon which the claim is being denied. Failure to notify the Owner within such a time period, shall cause Mazda to be responsible for repairing the Mazda Vehicle free of charge to the Owner, unless such failure is attributable to the Owner or to events beyond the control of Mazda or the Mazda Dealer.

EMISSION CONTROL WARRANTY

6. 24 months/38,400 km Emission Warranty Parts List

■ Air/Fuel Metering System

- Closed loop system
 - Oxygen sensor
 - Air flow sensor (Air flow meter)
 - Fuel injectors
- Cold start enrichment system
 - Cold start injector
- Electronic idle speed control system
 - Idle air control valve (Idle speed control valve)
 - Air valve
- Deceleration controls
- Variable Valve Timing System
 - Variable valve timing actuator
 - Oil control valve

■ Ignition Spark Advance/Retard System

- Certain spark advance/retard control components
 - High energy electronic ignition
 - Spark plugs*

■ Fuel Evaporative System

- Canister and associated control valve
 - Purge valve
 - Purge solenoid
 - Fuel filler cap

* Spark plugs are warranted under the basic warranty or until the first required maintenance, whichever comes first.

■ Positive Crankcase Ventilation (PCV) System

- PCV valve

■ Exhaust Gas Recirculation (EGR) System

- EGR function control valve (EGR control valve) and associated parts
 - EGR valve
 - EGR valve control solenoid

■ Secondary Air Injection System

- Air pump
- Air control valves and distribution pipes

■ Miscellaneous Items Used in Above Systems

- Hoses, clamps, fittings, gaskets, sealing materials, tubing, brackets and belts
- Exhaust pipe (between exhaust manifold and catalyst)
- Sensors, switches and valves

7. 96 months/128,000 km Emission Warranty Parts List

- Catalytic Converter
- Electronic Emissions Control Unit
- Onboard Emissions Diagnostic Device (Incorporated into Electronic Emission Control Unit)

The originally equipped tires are warranted by the tire manufacturer. Tires are not covered by the Unlimited Distance Warranty. Refer to the separate tire warranty pamphlet in the glove box for details.

1. To Get Warranty Service

Mazda Dealers in Canada are authorized to sell and service tires originally equipped on Mazda vehicles. To obtain warranty service, contact your Mazda dealership who will evaluate your tire concern. If you are traveling, you may also present the unserviceable tire to any authorized dealer of the tire manufacturer in Canada or the United States. For the location of authorized tire dealers, refer to the local telephone directory.

2. Tire Warrantor

To obtain detailed tire warranty information or for customer service, contact the appropriate tire warrantor listed below.

The Respective Tire Warrantors are:

Bridgestone / Firestone Canada Inc.
5770 Hurontario Street, Suite 400
Mississauga, Ontario L5R 3G5, Canada
1-800-267-1318

**Dunlop Tires (Canada) Inc. /
Goodyear Canada Inc.**
450 Kipling Avenue
Toronto, Ontario M8Z 5E1, Canada
1-800-387-3288
1-416-201-7997

Yokohama Tire (Canada) Inc.
#500-9325 200th Street
Langley, B.C. V1M 3A7, Canada
(604) 546-YOKO (9656)
1-800-810-YOKO (9656)

**Michelin North America (Canada)
Inc. / Uniroyal Goodrich Canada Inc.
Consumer Care Department**
2500 Daniel-Johnson Blvd.,
Suite 500 Laval, Quebec H7T 2P6, Canada
1-888-871-4444

Toyo Tire Canada
7791 Nelson Rd, Unit 120
Richmond, BC V6W 1G3, Canada
1-800-434-8696 (Western Canada)
1-800-668-5429 (Ontario)
1-800-363-0199 (Quebec/Maritimes)

Continental / General Tire Canada Inc.
6110 Cantay Rd.
Mississauga, Ontario L5R 3W5, Canada
1-800-461-1776

Pirelli Tire Inc.
1111 boul. Dr. Frederik-Philips,
Suite 506 St-Laurent, Quebec H4M 2X6,
Canada
1-800-363-0583 (Eastern Canada)
1-800-828-2585 (Ontario)
1-800-663-0148 (Western Canada)

American Kenda Rubber Ind. Co., LTD
7095 Americana Parkway
Reynoldsburg, OH 43068, USA
1-800-225-4714

REPLACEMENT PARTS AND ACCESSORIES LIMITED WARRANTY

1. What Is Covered

The Mazda genuine replacement parts and Mazda Accessories limited warranty covers Mazda genuine new or remanufactured replacement parts and Mazda Accessories sold by a Mazda Dealer and also includes Mazda Accessories installed by a Mazda Dealer or a Mazda Importer/Distributor prior to the retail delivery of a new Mazda Vehicle. This Limited Warranty does not mean that each Mazda part or accessory is defect free. For this reason, Mazda provides this Limited Warranty in order to remedy during the warranty period any such defects in materials and workmanship, subject to the exclusions indicated under “What Is Not Covered.”

Mazda genuine replacement parts (other than the battery) and Accessories purchased by a customer from a Mazda importer/Distributor or a Mazda dealer and installed by a Mazda importer/Distributor or a Mazda dealer are covered for **12 months/20,000 km** from the installation date or the remainder of the warranty coverage applied to the component by Mazda.

Mazda genuine replacement parts (other than the battery) and Accessories purchased by a customer from a Mazda dealer and not installed by a Mazda Dealer are covered for the first **12 months/20,000 km** from the purchase date excluding installation labor charges.

Consult your Mazda Dealer for replacement battery warranty terms.

REPLACEMENT PARTS AND ACCESSORIES LIMITED WARRANTY

2. What Is Not Covered

- Damage or corrosion due to accident, collision, fire, theft, natural disaster, etc.
- Damage or surface corrosion from the environment such as acid rain, airborne fallout (chemicals, tree sap), stones, salt, road hazards, hail, wind storm, lightning, floods and other natural disaster.
- Normal wear, tear or deterioration such as discoloration, fading, deformation, blurring etc.
- Air conditioner refrigerant charge after the first 12 months, unless replenished as part of a warranty repair.
- Replacement batteries. (Consult with your Mazda Dealer for the separate battery warranties.)
- Replacement parts or accessories installed on any Mazda Vehicle originally distributed, registered and normally operated out of the U.S., Canadian, or Mexican Markets as identified in the “Warranty Application” for New Vehicle Limited Warranty section of this booklet.
- Replacement parts or accessories installed on a Mazda Vehicle in which the odometer has been altered, or on which the actual kilometrage cannot be readily determined.
- Replacement parts or accessories used in applications for which they are not designed.
- Replacement parts or accessories installed improperly by a dealer or distributor other than Mazda Canada or a Mazda dealer.
- Any replacement part or accessory without proof of purchase or replacement date.
- Non-Mazda replacement parts or accessories which Mazda Dealers may sell or install on your Mazda Vehicle.
- If the vehicle has been classified a total loss and/or sold for salvage purposes or branded for any other reasons.
- Registration of the vehicle out of the U.S., Canadian, or Mexican Markets as identified in the “Warranty Application” for New Vehicle Limited Warranty section of this booklet.

3. To Get Warranty Service

You must take your Mazda Vehicle, along with this booklet and proof of purchase or replacement date, to a Mazda Dealer in Canada, the United States, Mexico or Puerto Rico during their normal service hours.

If you have any questions or need assistance regarding this warranty, refer to “When You Need to Talk to Mazda” on page 7.

4. Limited Liability

The liability of a Mazda Distributor under this warranty is limited solely to the repair or replacement of parts defective in material or workmanship by a Mazda Dealer at their place of business, and specifically does not include any expense of, or related to, transportation to such a dealer or payment for loss of use of the Mazda Vehicle during warranty repairs.

5. Other Terms

The “Other Terms” stated on page 15 in the New Vehicle Limited Warranty also apply to this warranty.

MAZDA DISTRIBUTORS

CANADA

Mazda Canada, Inc.

55 Vogell Road,
Richmond Hill, Ontario,
L4B 3K5, Canada
Phone: 1 (800) 263-4680 (In Canada)
(905) 787-7000 (Outside of Canada)

U.S.A. MAINLAND & HAWAII

Mazda North American Operations

7755, Irvine Center Drive
Irvine, CA 92618-2922, U.S.A.
P.O. Box 19734
Irvine, CA 92623-9734, U.S.A.
Phone: 1 (800) 222-5500 (In the U.S.A.)
(949) 727-1990 (Outside of the U.S.A.)

MEXICO

Mazda Motor de Mexico

Mario Pani No. 150 P. B.
Col. Lomas de Santa Fe
Mexico, D. F. 05300
Phone: (800) 222-5500 (In the U.S.A.)
01-866-315-0220 (Outside of the U.S.A.)

PUERTO RICO

International Automotive Distributor Group, LLC (d/b/a Mazda de Puerto Rico)

P.O. Box 191850,
San Juan,
Puerto Rico, 00919-1850
Phone: (787) 641-1777

GUAM

Triple J Enterprises, Inc. (d.b.a. Triple J Motors)

P.O. Box 6066,
Tamuning, Guam 96931
Phone: (671) 646-9126

SAIPAN

Triple J Saipan, Inc. (d.b.a. Triple J Motors)

P.O. Box 500487
Saipan
MP 96950-0487
Phone: (670) 235-4868

SCHEDULED MAINTENANCE RECORD

The service record below has been designed to include the signature of your Mazda Dealer representative or other repair establishment representative. This signed form is evidence of completion of scheduled maintenance services and should be kept with the receipts, repair orders, and invoices in the glove box. All records should be given to any subsequent owner of the Mazda Vehicle. **Failure to properly maintain your vehicle can result in your warranty being voided either in whole or in part.**

■ Maintenance Records - Proof of Maintenance

Mazda recommends having maintenance performed by an authorized Mazda dealership. Mazda dealership technicians are specially trained to maintain and service Mazda vehicles; Mazda technicians stay up-to-date on the latest service information through service bulletins, publications, and factory training. You can be reassured you are getting the best possible service for your Mazda vehicle when you take it to your Mazda dealer. If you elect to perform maintenance yourself or have your vehicle serviced at a location other than an Authorized Mazda Dealer, Mazda requires that all fluids, parts and materials must meet Mazda standards for durability and performance as described in your Owner's Manual. To continue warranty eligibility and to protect your investment, it is your responsibility to properly maintain your vehicle according to factory recommended schedules outlined in your Owner's Manual. As part of this you must keep your maintenance records, receipts, repair orders and any other documents as evidence this maintenance was performed. You must present these documents, should any warranty coverage disagreement occur. Failure to do so can result in your warranty being voided either in whole or in part.

This evidence may consist of the following:

- The Mazda Scheduled Maintenance Record, on page 34, must be completely filled out showing mileage, repair order number, date for each service, and signed by a qualified automotive service technician who service vehicles.
- Original copies of repair orders or other receipts that include the mileage and date the vehicle was serviced. Each receipt should be signed by a qualified automotive service technician.
- For self maintenance, a statement that you completed the maintenance yourself, displaying mileage and the date the work was performed. Also, receipts for the replacement parts (fluid, filters, etc.) indicating the date and mileage must accompany this statement.

Note:

If you elect to perform maintenance yourself or have your vehicle serviced at a location other than an Authorized Mazda Dealer, Mazda requires that all fluids, parts and materials must meet Mazda standards for durability and performance as described in your Owner's Manual.

SCHEDULED MAINTENANCE RECORD

■ Scheduled Maintenance Intervals

For your reference, the basic interval for scheduled maintenance is 8,000 km or 4-months, whichever comes first.

Refer to your Owner's Manual to make sure of the complete schedule.

Pre-Delivery Inspection
Kilometrage:
R.O. No./Date:
Authorized Signature:
Dealership:

1 8,000 km or 4-Months
Kilometrage:
R.O. No./Date:
Authorized Signature:
Dealership:

2 16,000 km or 8-Months
Kilometrage:
R.O. No./Date:
Authorized Signature:
Dealership:

3 24,000 km or 12-Months
Kilometrage:
R.O. No./Date:
Authorized Signature:
Dealership:

4 32,000 km or 16-Months
Kilometrage:
R.O. No./Date:
Authorized Signature:
Dealership:

5 40,000 km or 20-Months
Kilometrage:
R.O. No./Date:
Authorized Signature:
Dealership:

SCHEDULED MAINTENANCE RECORD

6 48,000 km or 24-Months

Kilometrage: _____

R.O. No./Date: _____

Authorized Signature: _____

Dealership: _____

7 56,000 km or 28-Months

Kilometrage: _____

R.O. No./Date: _____

Authorized Signature: _____

Dealership: _____

8 64,000 km or 32-Months

Kilometrage: _____

R.O. No./Date: _____

Authorized Signature: _____

Dealership: _____

9 72,000 km or 36-Months

Kilometrage: _____

R.O. No./Date: _____

Authorized Signature: _____

Dealership: _____

10 80,000 km or 40-Months

Kilometrage: _____

R.O. No./Date: _____

Authorized Signature: _____

Dealership: _____

11 88,000 km or 44-Months

Kilometrage: _____

R.O. No./Date: _____

Authorized Signature: _____

Dealership: _____

12 96,000 km or 48-Months

Kilometrage: _____

R.O. No./Date: _____

Authorized Signature: _____

Dealership: _____

13 104,000 km or 52-Months

Kilometrage: _____

R.O. No./Date: _____

Authorized Signature: _____

Dealership: _____

SCHEDULED MAINTENANCE RECORD

14 112,000 km or 56-Months

Kilometrage: _____

R.O. No./Date: _____

Authorized Signature: _____

Dealership: _____

15 120,000 km or 60-Months

Kilometrage: _____

R.O. No./Date: _____

Authorized Signature: _____

Dealership: _____

16 128,000 km or 64-Months

Kilometrage: _____

R.O. No./Date: _____

Authorized Signature: _____

Dealership: _____

17 136,000 km or 68-Months

Kilometrage: _____

R.O. No./Date: _____

Authorized Signature: _____

Dealership: _____

18 144,000 km or 72-Months

Kilometrage: _____

R.O. No./Date: _____

Authorized Signature: _____

Dealership: _____

19 152,000 km or 76-Months

Kilometrage: _____

R.O. No./Date: _____

Authorized Signature: _____

Dealership: _____

20 160,000 km or 80-Months

Kilometrage: _____

R.O. No./Date: _____

Authorized Signature: _____

Dealership: _____

21 168,000 km or 84-Months

Kilometrage: _____

R.O. No./Date: _____

Authorized Signature: _____

Dealership: _____

SCHEDULED MAINTENANCE RECORD

22 176,000 km or 88-Months
Kilometrage: _____
R.O. No./Date: _____
Authorized Signature: _____
Dealership: _____

23 184,000 km or 92-Months
Kilometrage: _____
R.O. No./Date: _____
Authorized Signature: _____
Dealership: _____

24 192,000 km or 96-Months
Kilometrage: _____
R.O. No./Date: _____
Authorized Signature: _____
Dealership: _____

25 200,000 km or 100-Months
Kilometrage: _____
R.O. No./Date: _____
Authorized Signature: _____
Dealership: _____

26 208,000 km or 104-Months
Kilometrage: _____
R.O. No./Date: _____
Authorized Signature: _____
Dealership: _____

27 216,000 km or 108-Months
Kilometrage: _____
R.O. No./Date: _____
Authorized Signature: _____
Dealership: _____

28 224,000 km or 112-Months
Kilometrage: _____
R.O. No./Date: _____
Authorized Signature: _____
Dealership: _____

29 232,000 km or 116-Months
Kilometrage: _____
R.O. No./Date: _____
Authorized Signature: _____
Dealership: _____



Registration of Ownership/Owner's Copy

Enregistrement de propriété/exemplaire du propriétaire

Vehicle Identification Number Numéro d'identification du véhicule		Date of Delivery (Mo. Day. Yr.) Date de livraison (mois, jour, année)		Key No. No de la clé	Telephone No. No de téléphone
Owner's Name Nom du propriétaire	Mr. M.	Mrs. Mme	Ms. Mlle		
	Street Rue				
Owner's Address Adresse du propriétaire	City Ville		Province Province	Postal Code Code postal	

I acknowledge that I have received Mazda Manufacturer's Warranty and Owner's responsibilities, and that my selling dealer has explained to me:

- 1) Terms and conditions of warranty.
 - 2) Importance of required maintenance service.
- I have, visually, inspected the Mazda Vehicle as delivered to me, and it appears to be in satisfactory condition.

Je reconnais avoir compris la garantie Mazda et la responsabilité incombant au propriétaire et que mon concessionnaire m'a fourni les explications:

- 1) De la durée et des conditions de la garantie;
 - 2) De l'importance du service d'entretien requis;
- J'ai inspecté visuellement le véhicule Mazda livré qui apparaît être en état satisfaisant.

Owner's Signature

Signature du propriétaire

Dealer's Name and Signature

Nom et signature du concessionnaire



Registration of Ownership/Dealer's Copy

Enregistrement de propriété/exemplaire du concessionnaire

Vehicle Identification Number Numéro d'identification du véhicule	Date of Delivery (Mo. Day. Yr.) Date de livraison (mois, jour, année)	Key No. No de la clé	Telephone No. No de téléphone
Owner's Name Nom du propriétaire	Mr. M.	Mrs. Mme	
Owner's Address Adresse du propriétaire	Street Rue		
	City Ville	Province Province	Postal Code Code postal

I acknowledge that I have received Mazda Manufacturer's Warranty and Owner's responsibilities, and that my selling dealer has explained to me:

- 1) Terms and conditions of warranty.
 - 2) Importance of required maintenance service.
- I have, visually, inspected the Mazda Vehicle as delivered to me, and it appears to be in satisfactory condition.

Je reconnais avoir compris la garantie Mazda et la responsabilité incombant au propriétaire et que mon concessionnaire m'a fourni les explications:

- 1) De la durée et des conditions de la garantie;
 - 2) De l'importance du service d'entretien requis;
- J'ai inspecté visuellement le véhicule Mazda livré qui apparaît être en état satisfaisant.

Owner's Signature

Signature du propriétaire

Dealer's Name and Signature

Nom et signature du concessionnaire



Registration of Ownership/Distributor's Copy Enregistrement de propriété/exemplaire du distributeur

Vehicle Identification Number Numéro d'identification du véhicule	Date of Delivery (Mo. Day. Yr.) Date de livraison (mois jour année)	Key No. No de la clé	Telephone No. No de téléphone
Owner's Name Nom du propriétaire	Mr. Mrs. M. Mme Mlle		
Owner's Address Adresse du propriétaire	Street Rue City Ville	Province Province	Postal Code Code postal

I acknowledge that I have received Mazda Manufacturer's Warranty and Owner's responsibilities, and that my selling dealer has explained to me:

- 1) Terms and conditions of warranty.
 - 2) Importance of required maintenance service.
- I have, visually, inspected the Mazda Vehicle as delivered to me, and it appears to be in satisfactory condition.

Je reconnais avoir compris la garantie Mazda et la responsabilité incombant au propriétaire et que mon concessionnaire m'a fourni les explications:

- 1) De la durée et des conditions de la garantie;
 - 2) De l'importance du service d'entretien requis;
- J'ai inspecté visuellement le véhicule Mazda livré qui apparaît être en état satisfaisant.

Owner's Signature

Signature du propriétaire

Dealer's Name and Signature

Nom et signature du concessionnaire

Keep this card at distributor on behalf of Mazda Motor Corporation for five years from date of delivery.

Au nom de la Mazda Motor Corporation, conserver cette carte chez le distributeur pendant cinq ans à compter de la date de livraison.



Certificate of Transfer of Warranty/Owner's Copy

Avis de transfert de garantie/exemplaire du propriétaire

We hereby advise of the transfer of warranty from the original owner to the new owner below.
 Par la présente nous vous avisons du transfert de la garantie du premier propriétaire au nouveau propriétaire mentionné ci-dessous.

Dealer's Name Nom du concessionnaire					
Dealer's Signature Signature du concessionnaire					
Vehicle Identification Number Numéro d'identification du véhicule		Original Date of Delivery Ère date de vente		Date of Transfer Date de transfert	
				km	
Original Owner's Name Nom du premier propriétaire		Mr. M.	Mrs. Mme	Ms. Mlle	
Address Adresse		Street Rue		City Ville	Province Province
New Owner's Name Nom du nouveau propriétaire		Mr. M.	Mrs. Mme	Ms. Mlle	Postal Code Code postal
Address Adresse		Street Rue			
		City Ville	Province Province		Postal Code Code postal
New Owner's Signature Signature du nouveau propriétaire					

From:
De:

To:
À:



Certificate of Transfer of Warranty/Dealer's Copy

Avis de transfert de garantie/exemplaire du concessionnaire

We hereby advise of the transfer of warranty from the original owner to the new owner below.
 Par la présente nous vous avisons du transfert de la garantie du premier propriétaire au nouveau propriétaire mentionné ci-dessous.

Dealer's Name Nom du concessionnaire					
Dealer's Signature Signature du concessionnaire					
Vehicle Identification Number Numéro d'identification du véhicule		Original Date of Delivery 1ère date de vente		Date of Transfer Date de transfert	
				km	
Original Owner's Name Nom du premier propriétaire		Mr. M.	Mrs. Mme	Ms. Mlle	
Address Adresse		Street Rue		City Ville	Province Province
New Owner's Name Nom du nouveau propriétaire		Mr. M.	Mrs. Mme	Ms. Mlle	Postal Code Code postal
Address Adresse		Street Rue			
		City Ville		Province Province	Postal Code Code postal
New Owner's Signature Signature du nouveau propriétaire					

From:
De:

To:
À:



Certificate of Transfer of Warranty/Distributor's Copy

Avis de transfert de garantie/exemplaire du distributeur

We hereby advise of the transfer of warranty from the original owner to the new owner below.

Par la présente nous vous avisons du transfert de la garantie du premier propriétaire au nouveau propriétaire mentionné ci-dessous.

Dealer's Name Nom du concessionnaire					
Dealer's Signature Signature du concessionnaire					
Vehicle Identification Number Numéro d'identification du véhicule		Original Date of Delivery Date de vente		Date of Transfer Date de transfert	
				km	
Original Owner's Name Nom du premier propriétaire		Mr. M.	Mrs. Mme	Ms. Mlle	
Address Adresse		Street Rue		City Ville	Province Province
New Owner's Name Nom du nouveau propriétaire		Mr. M.	Mrs. Mme	Ms. Mlle	Postal Code Code postal
Address Adresse		Street Rue			
		City Ville		Province Province	Postal Code Code postal
New Owner's Signature Signature du nouveau propriétaire					

From:

De:

To:

À:



1000010398-L4B3K5-BR01



MAZDA CANADA INC
ATTENTION: SERVICE DEPARTMENT
55 VOGELL RD
RICHMOND HILL ON L4B 9Z9



1000010398-L4B3K5-BR01



MAZDA CANADA INC
ATTENTION: SERVICE DEPARTMENT
55 VOGELL RD
RICHMOND HILL ON L4B 9Z9